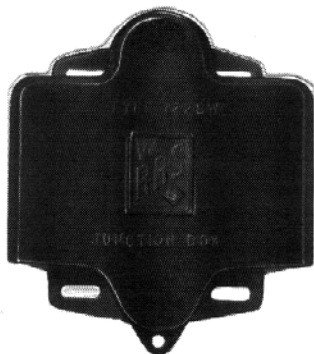
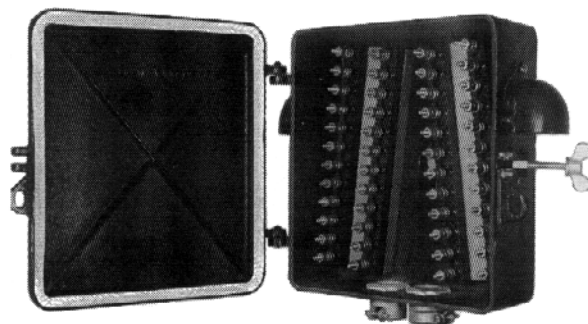


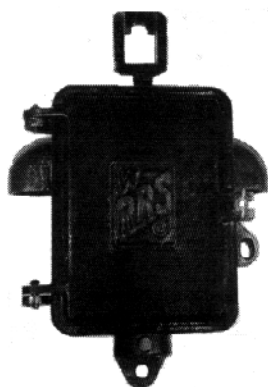
## Surface and Pole Mounted Terminal Housings



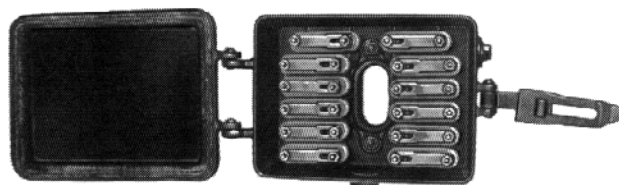
**Type 1228**



**Type 1236**



**Type 1232**



**Type 1265**

Terminal housings used for cable connections, arrestors, resistors, transformers, etc.

Wood terminal boards are available for equipment mounting.

Available in a variety of configurations of terminal and cable entrances.

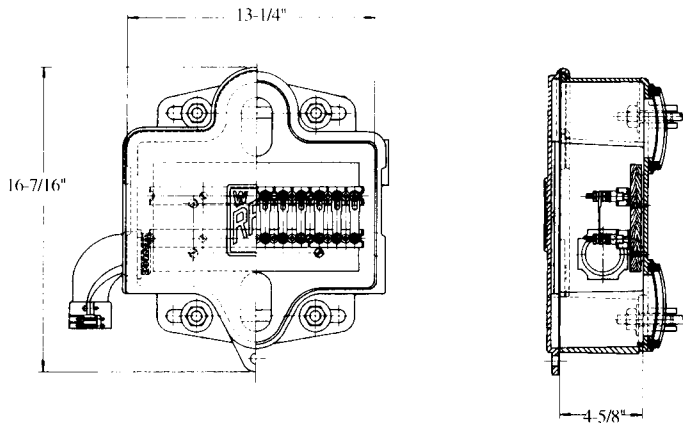
Housing descriptions, dimensions and some typical layouts found on the following pages.

All terminal housings made of cast iron except type 1236 which is cast aluminum.

### Ordering Information

1. Select housing.
2. Specify terminal requirements. Terminals described on page 14-1.
3. Specify cable entrances required via illustrations 10.
4. Specify connectors. See page 8.
5. Specify ventilators and outlets.
6. Specify diameter of pole mounting required.

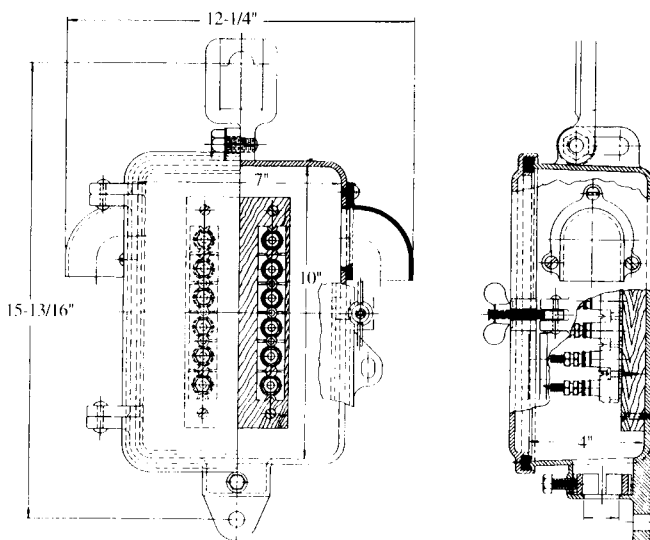
### Type 1228 Terminal Housing



Type 1228 terminal housing is used for clamping to 4", 5", 6" or 8" pipe post. It has a slide cover which can be removed when raised 3". It is especially useful for mounting behind a ladder where a terminal box with hinged cover would prove awkward.

A terminal board in the back provides for mounting terminals, resistors, etc. Two openings in the back permit easy entrance of cable and wires from the mast.

### Type 1232 Terminal Housing



Type 1232 pole terminal housing measures 10" high by 7" wide by 4" deep inside measurements. The assembly shown is equipped with two 6-post multiple unit terminal strips for connections. An adjustable hanger is furnished at the top of the box for attachment to the through bolt on the crossarm. A 5/8" diameter hole is provided in the projection at the bottom of the box to secure the box to the pole.

Clamps in the recess at the bottom of the box provide a secure fastening for cables from 3/4" to 1-1/4" outside diameter.

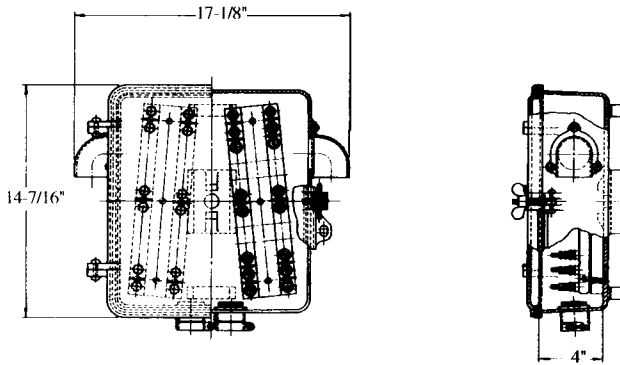
2" dia. hooded openings in the sides of the box are protected with fiber bushings, for line wire entrances.

**WESTERN-CULLEN-HAYES, INC.**

2700 W. 36TH PLACE  
(773) 254-9600

CHICAGO, IL. 60632  
FAX (773) 254-1110

## Type 1236 Terminal Housing

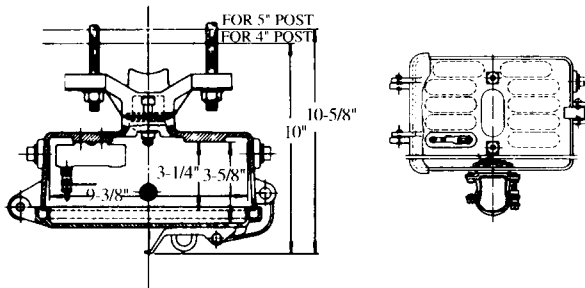


Type 1236 pole terminal housing can be equipped with as many as 48 binding posts. A 7/8" hole is provided in the back of the box for through bolt mounting on 4" or larger diameter pipe or on wood poles. Can also be surface mounted.

The type 1236 is also an excellent enclosure for resistors, small electrical components or can be equipped with type 2190 key switch mechanisms.

Inside dimensions: 13-1/4" high x 11-3/4" wide x 4".

## Type 1265 Terminal Housing



Type 1265 terminal box is provided for mounting on 4" or 5" I.D. pipe as specified. It contains 12 or less terminal blocks for the connection of cables and the wires that run to flashing light signal units, bells, or other apparatus mounted on the pole.