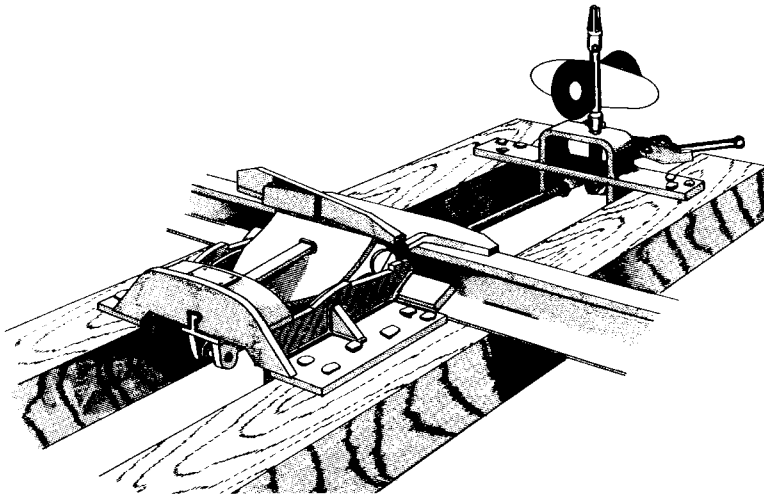


Derail Operating Stands



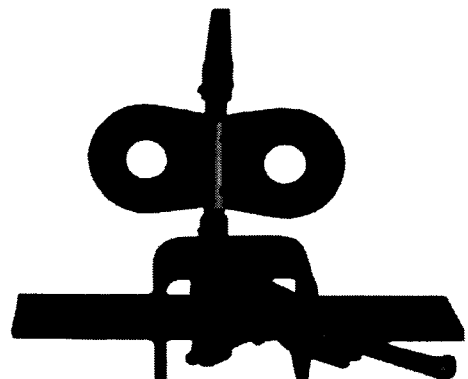
Available in 3 Models:

- Standard two-tie operating stand
- Close coupled operating stand
- High rise operating stand

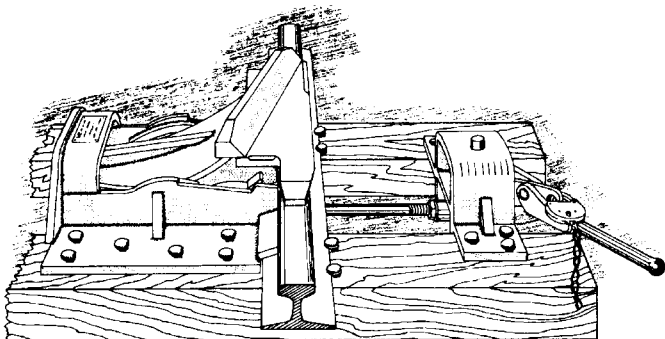
Simple, rugged device forged and welded from 3/4 inch steel plate is used for throwing the derail block of a sliding derail on and off the rail. Unit's stroke is adjustable for any derail. Vanes are made of 14 gauge sheet steel, formed to fit the staff. Hole vane is enameled red. Solid vane is white. Vanes are bolted to the staff through channel washers that hold the vanes in correct positions. All operating stands may be padlocked. Lamp tips are made of cast gray iron and furnished on an individual basis that is correct for the road using the stand.

Two-Tie Operating Stand

Illustrated above and at below right. Permits easy hand operation and readily indicates on-rail or off-rail position. Top of 1-1/4 inch staff is 17 inches above the tie.



Closed Coupled Operating Stand



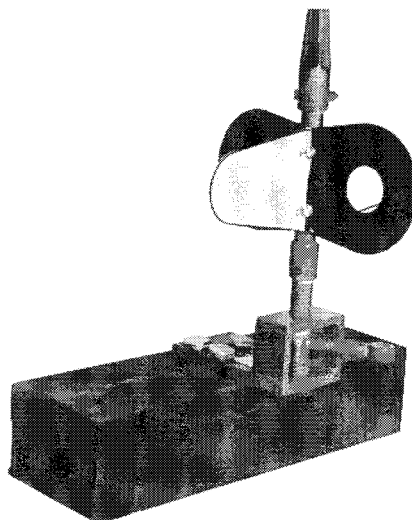
Operating Stand Close Coupled To Model HB

Staff cut off 1/2 inch above base forging for clearance. Top of shoe can be painted bright color so position of derail shoe, on-rail or off-rail is readily indicated. Connecting rod is 37 inches long. **No long ties are required.**

Target Stand

For use with any derail except portable model.

Used only to indicate on or off position of derail. Cannot be used to throw a derail. Rugged, solid steel plate construction. Throw adjustable for stroke of any derail. Lamp staff, vanes and lamp tip are same as used on Operating Stand.



Specifications:

Operation Stand	Vanes	Connecting* Rod	Lamp Tip	Weight
Standard 2-Tie	14 Gauge Enameled Red & White	5'-2"	Cast Gray Iron	90 lbs.
Close-Coupled	--	3'-1"	--	76 lbs.
Target Stand	14 Gauge Enameled Red & White	Furnished to fit Specific Derail Used	Cast Gray Iron	35 lbs.
High Rise	14 Gauge Enameled Red & White	8'-2"	Cast Gray Iron	180 lbs.

Ordering Information

Standard vanes are red and white unless otherwise specified. Reflectorized vanes available at additional cost. If special lamp tips are required specify length of taper, width of top and width of base parallel to stop vane. Similar dimensions at right angles to stop vane are required.

*** Connecting Rods available in 1 inch or 3/4 inch depending upon application**

WESTERN-CULLEN-HAYES, INC.

2700 W. 36th Place
(773) 254-9600

Chicago, Il. 60632
FAX (773) 254-1110

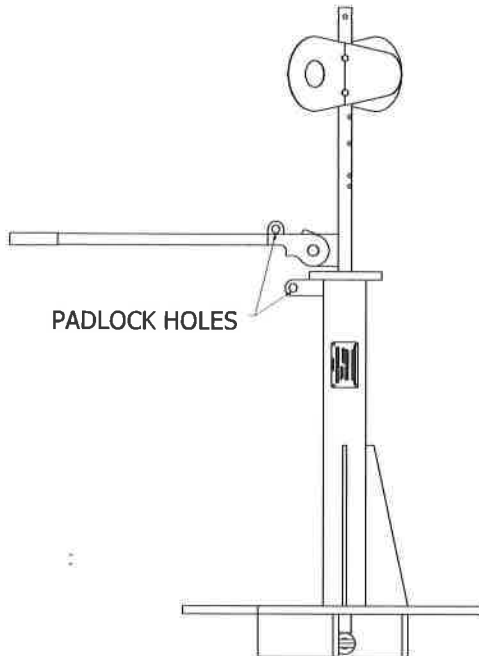


WESTERN-CULLEN-HAYES, INC.

120 N. 3rd Street, P.O. Box 756, Richmond, Indiana 47374
(765) 962-0526 FAX (765) 966-5374

High Rise Derail Operating Stand

Model HRS-100



The High Rise Derail Operating Stand is primarily a one piece weldment and is shipped assembled ready for installation. The only replaceable parts are the targets, connecting rod, lamp tip (if used) and the adjustable 1 inch diameter eyebolt.

Each HRS-100 is shipped in three pieces; the primary welded unit, one connecting rod complete with adjustable clevis ends and pins, and a protective carton for the target vanes.

The target vanes are normally placed centered, 41-5/8" above the top of the ties. Other heights can be accommodated at nominal cost, if specified.

•Ergonomic Design

•Allows Movement of Sliding Derail Without Bending or Stooping

•Handle: 34 inch Above Top of Tie

•Stroke Adjusts for any Sliding Derail

•Target Vanes are Red and White 14 Gauge Steel

•Stand can be Pad Locked in On and Off-Rail Position

•Reference: HRS-100

Standard units equipped with:

1. Red and White targets
2. Adjustable connecting rod 8'-2"
(this places center of target staff 8'-10-1/4" from center of track)

When ordering specify:

1. Target colors if other than standard
2. Connecting rod length if other than standard
3. Optional Lamp tip available.

Tests conducted at our plant show that a Model HB Derail with a Derail Wheel Crowder can be operated with less than 30 pounds pull effort.

Shipping weight is approximately 180 pounds.

Order Derail separately. Specify HB right hand or left hand; HBXS double throw. Specify size of rail section on which derail will be used.