

Electric Lock Derail Operator (ELDO)

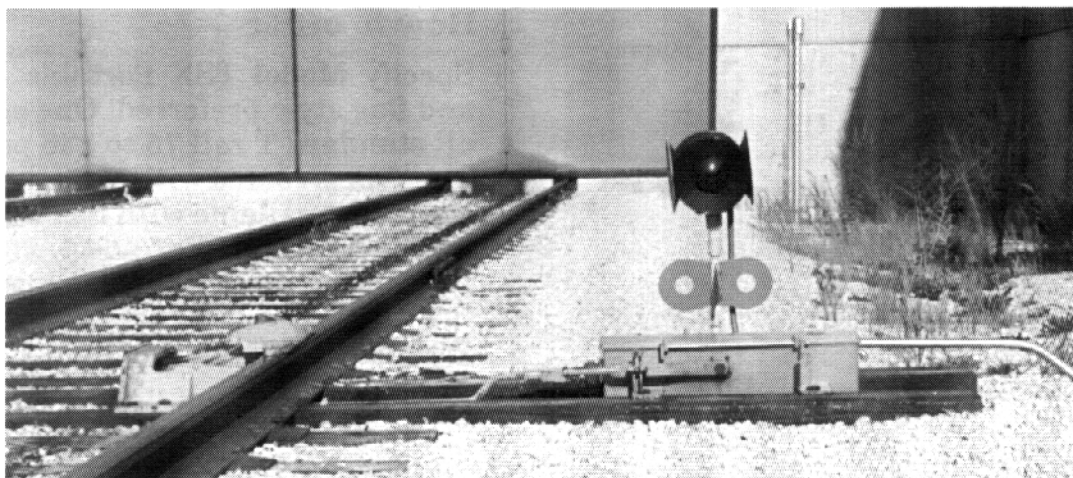
- Protect work areas, satisfy FRA and OSHA requirements
- Electrically locked, manually operated
- Easy to install and operate
- Flexible system adaptable to your requirements
- Available for 115VAC or 12 VDC operation

The Western-Cullen-Hayes Electric Lock Derail Operator or "ELDO," contains a solenoid locking device and associated electric equipment mounted inside a rugged, compact, weather resistant steel housing. The ELDO is designed to enhance the safety and security of any railroad-related work area. It is an uncomplicated device that electrically locks a Hayes Type HB Derail on the track to prevent the unauthorized entry of a train into a particular area or building.

Responsible persons in the work area operate the ELDO locking control while train crewmen are responsible for removing and replacing the derail, virtually eliminating the possibility of an inadvertent derailment. The control circuit for an ELDO can be interlocked with plant rail doors or freight car loading and unloading equipment so the derail cannot be unlocked while the equipment is operating or the door is closed.

ELDOs are also used to initiate bells and beacon lights to warn workers in the area being protected.

Grade crossing signals can also be initiated by an ELDO where a road crossing lies between the derail site and the area being protected. There is a wide selection of ELDO controls available; from a simple two position keyswitch to multi-function signal interlock control panels. Please consult Western-Cullen-Hayes with your particular requirements. A full range of accessories are available to complete the ELDO Derail System; target mounts and switch lamps in a variety of color combinations, colored light trainman's signals and warning bells, beacon lights, automatic mechanical blue flags and wheel crowders.



WESTERN-CULLEN-HAYES, INC.
2700 W. 36th Place
(773) 254-9600

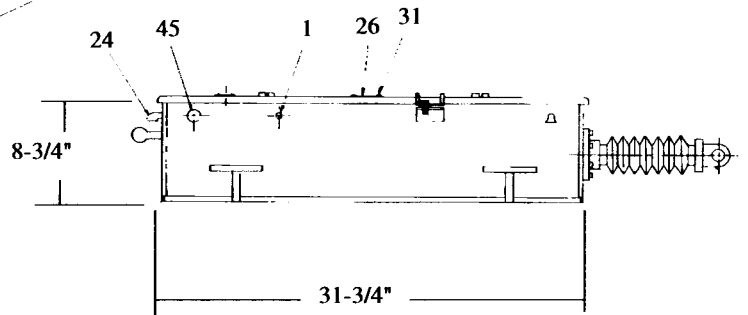
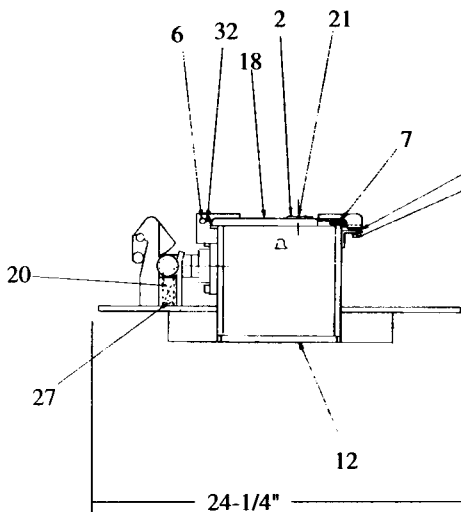
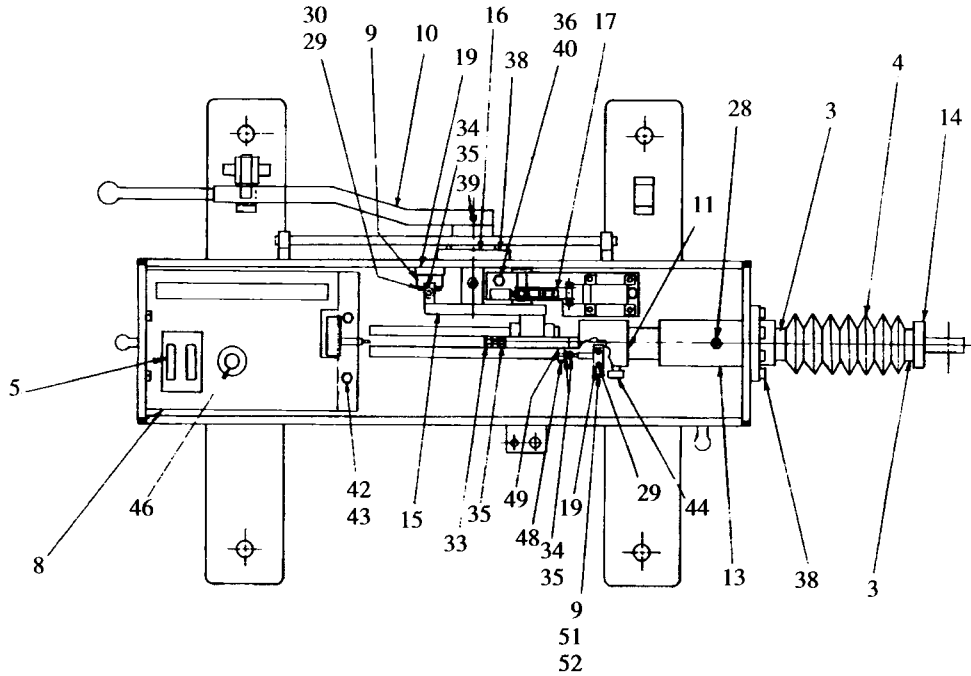
Chicago, IL 60632
FAX (773) 254-1110



WESTERN-CULLEN-HAYES, INC.
120 N. 3rd Street, P.O. Box 756, Richmond, Indiana 47374
(765) 962-0526
FAX (765) 966-5374

Electric Lock Derail Operator (ELDO)

- 416-00-00 115VAC - Far Rail
- 420-00-00 115VAC - Near Rail
- 416-22-00 12VDC - Far Rail
- 420-50-00 12VDC - Near Rail



Electric Lock Derail Operator (ELDO)

Ref.	Description	Part No.
1	Plastic Pipe Plug	38-0045-273
2	Tamper Proof Screw	39-0019-7
3	Hose Clamp	400-03-00
4	Protector Boot	400-04-00
5	5 Amp Fuse	400-35-07
6	Cover Pin	400-38-00
7	Weatherstrip	400-39-00
8	Chassis Assembly - Far Rail	416-03-00
	Chassis Assembly - Near Rail	420-03-00
9	Micro Switch Assembly	416-03-03
10	Handle	416-04-00
11	Cam	416-06-00
12	Case Assembly - Far Rail	416-08-00
	Case Assembly - Near Rail	420-08-00
13	Tube Mount Assembly	416-09-00
14	Shaft Assembly	416-10-00
15	Cam Follower - Far Rail	416-11-00
	Cam Follower - Near Rail	419-03-00
16	Handle Tube Assembly	416-12-00
17	Eldo Lock Assembly 115V - Far Rail	416-13-00
	Eldo Lock Assembly 115V - Near Rail	420-13-00
	Solenoid Only	416-13-01
18	Cover Assembly	416-14-00
19	Mounting Block	416-15-00
20	Spring	416-16-00
21	Window	416-17-00
22	Electrical Diagram (Not Shown)	416-18-00

Ref.	Description	Part No.
24	Ventilator Assembly	1143-16-A
26	Name Plate	5612-41
27	1/16" x 3/8" Roll Pin	WW-00-AZ-3-0037
28	1/8" NPT Grease Fitting	5000
29	6-32 x 2-1/4" Machine Screw	AA-10-AA-3-0225
30	#6 Lock Washer	RR-00-AF-3
31	#6 x 1/4" Drive Screw	AS-10-AF-3-0025
32	10-32 x 1/4" Set Screw	DD-48-DD-3-0025
33	1/4"-20 x 7/8" Cap Screw	AA-12-EE-3-0087
34	1/4"-20 x 1-1/4" Cap Screw	AA-12-EE-3-0125
35	1/4"-20 Hex Nut	JJ-12-EE-3
36	5/16"-18 x 1/2" Cap Screw	AA-12-GG-3-005
37	5/16"-18 x 5/8" Cap Screw	AA-12-GG-3-0062
38	5/16"-24 x 7/8" 12 Point Bolt	400-21-60
39	5/16" x 2" Roll Pin	WW-00-AK-3-02
40	5/16" Lockwasher	RR-00-AK-3
41	5/16" Pushnut	AT-00-AK-3
42	3/8" Plain Washer	PP-00-AM-3
43	3/8"-16 x 1/2" Cap Screw	AA-12-JJ-3-005
44	3/8"-16 x 5/8" Set Screw	DD-38-JJ-3-0062
46	Lamp 110V-10W	1832-51
	Lamp 10V - 18W	1832-53
	Lamp Socket	90809
48	6-32 x 1" Machine Screw	AA-10-AA-3-01
49	Block	416-15-01
51	#6 Internal Lockwasher	SS-00-AF-3
52	6-32 Hex Nut	JJ-12-AA-3

Consult W-C-H for sub-assembly parts not listed.

WESTERN-CULLEN-HAYES, INC.

2700 W. 36th Place
(773) 254-9600

Chicago, IL 60632
FAX (773) 254-1110



WESTERN-CULLEN-HAYES, INC.

120 N. 3rd Street, P.O. Box 756, Richmond, Indiana 47374
(765) 962-0526

FAX (765) 966-5374