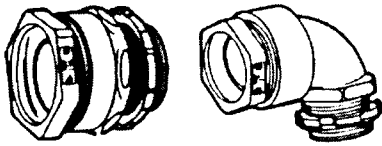
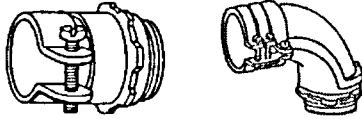


Connectors, Conduit, Vents and Outlets



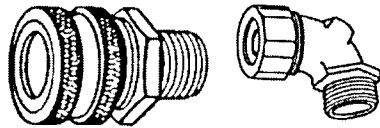
Sealtite Connectors

Sealtite connectors available in the following sizes: 1/2", 3/4", 1", 1-1/4", 1-1/2" and 2". Specify straight or 90 degree.



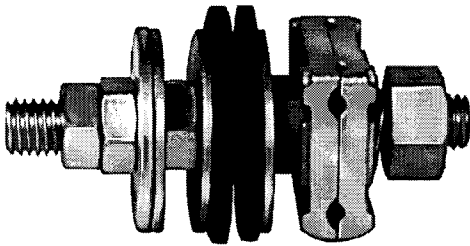
**Metallic Conduit and
Hose Connectors**

Metallic conduit (Greenfield) and hose connectors available in the following sizes: 1/2", 3/4", 1", 1-1/4", 1-1/2" and 2". Specify straight or 90 degree.



Cable Grip Connectors

Cable grips available in the following hub sizes: 3/8", 1/2", 3/4", 1", 1-1/4", 1-1/2" and 2". Specify cable entrance diameter from .125 thru 1.850.



**Type 1155 Track
Lead Connector**

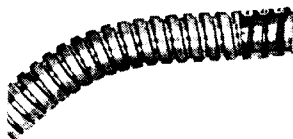
This connector consists of a 1/2" threaded steel rod 4" long, with steel washers, steel hex nuts for clamping to the wall of the bootleg, hex nuts for terminating the wires, complete with bronze universal wire clamps, and necessary bakelized canvas insulation. All steel parts are hot galvanized or zinc plated.

Type 1155-241 has a 3/8" long insulating bushing for 3/16"-1/4" thick wall and type 1155-241A has a 5/8" long insulating bushing for 5/16"-3/8" thick wall. Both types are used for #6 A.W.G. wire.



Sealtite

Sealtite available in the following sizes: 1/2", 3/4", 1", 1-1/4", 1-1/2" and 2".



**Metallic Conduit
(Greenfield)**

Metallic conduit (Greenfield) available in the following sizes: 1/2", 3/4", 1", 1-1/4", 1-1/2" and 2".



Hose

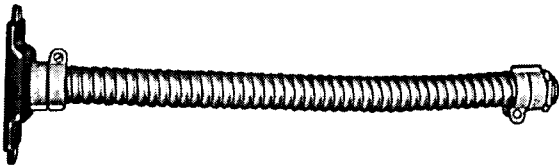
Hose available in the following sizes: 1", 1-1/4" and 1-1/2" I.D.

WESTERN-CULLEN-HAYES, INC.

2700 W. 36TH PLACE
(773) 254-9600

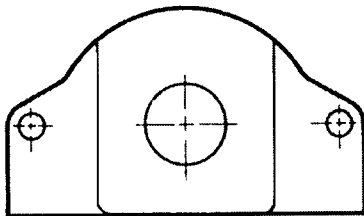
CHICAGO, IL. 60632
FAX (773) 254-1110

Connectors, Conduit, Vents and Outlets Continued



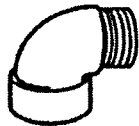
Flexible Connector

Flexible connections with cover plates for protecting wires between terminal housings and switch circuit controllers. Specify Greenfield (shown), Sealtite or hose length and diameter. Choose cover from listing below and specify manufacture of circuit controller.



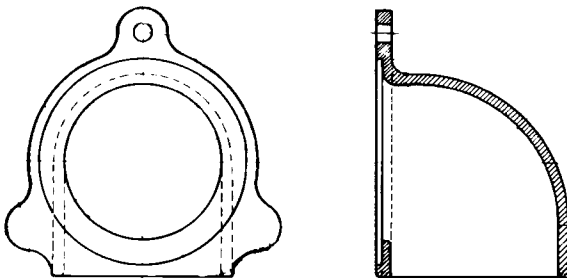
Circuit Controller Cover Plate

Circuit controller cover plates. Available without hole or with machined and threaded hole for 1/2", 3/4", 1", 1-1/4", 1-1/2" or 2" NPT conduit fittings. Specify with or without hole, hole size and manufacture of circuit controller to be attached.



90° Ventilator

90° ventilator. 3/8" NPT elbow with vented plug.



Cable Outlets

Cable outlets. Cast iron. Supplied with fiber bushings. 2" diameter opening.

Cable Entrance Openings Specify Size of Opening and Location Specify Location of Vents

